



MPI-507

Multifunctional electrical installations meter



KT-256F

Thermal imager

Comprehensive measurements of electrical installations

Capabilities

- **MPI-507** | Measurement of short circuit loop parameters.
- **MPI-507** | Testing RCD breakers of AC, A types.
- **MPI-507** | Earth resistance measurement.
- **MPI-507** | Insulation resistance measurement.
- **MPI-507** | Measurement of resistance of protective conductors and equipotential bondings.
- **MPI-507** | Phase sequence indication.
- **KT-256F** | Infrared diagnostics.



CAT IV
300 V

CAT III
600 V

 **BLUETOOTH**

 **IP67**

MPI-507

Multifunctional electrical installations meter

Measurement of short circuit loop parameters

- Measurement of short circuit loop impedance in networks with rated voltage: 220/380 V, 230 V/400 V, 240/415 V and frequency 45...65 Hz, operating voltage range: 180...460 V.
- Indication of short circuit loop resistance R and short circuit loop reactance X.
- Measurements of short circuit loop impedance with 15 mA current, without tripping the RCD circuit breaker.
- Maximum test current: 7.6 A (at 230 V), 13.3 A (at 400 V).

Testing RCD breakers of AC, A types

- Testing of prompt, short-delay and selective RCDs with rated current values 10, 15, 30, 100, 300, 500 mA.
- Measurement of IA trip current and tripping time t_A for currents 0.5 I_{Δn'}, 1 I_{Δn'}, 2 I_{Δn'}, 5 I_{Δn'}.
- RE and UB measurement without RCD tripping.
- Extended AUTO function of RCD measurement, with the possibility of measuring Z_{L-PE} with low current.
- Measurement of I_A and t_A during one RCD tripping.

Earth resistance measurement

- Measurement with 3-pole method.

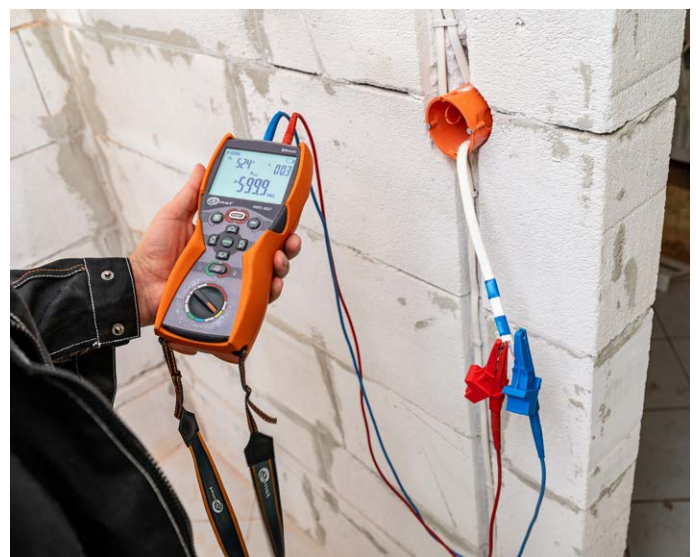
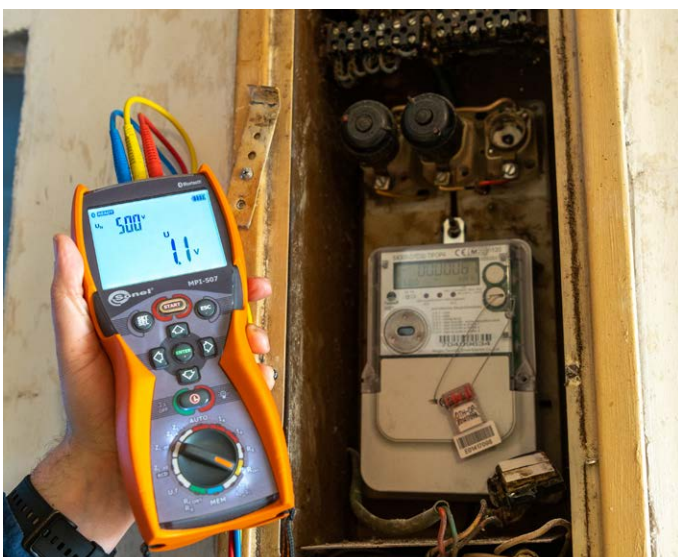
Insulation resistance measurement

- Test voltage 100 V, 250 V, 500 V.

Measurement of resistance of protective conductors and equipotential bondings

- Measurement of protective connections continuity with a ±200 mA current in accordance with EN 61557-4.
- Autocalibration of test leads - any leads can be used.
- Low current resistance measurement with sound signaling.

Phase sequence indication





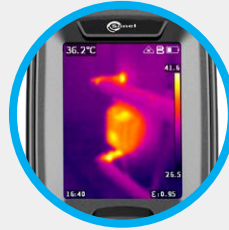
-  **IP54**
-  **LASER POINTER**
-  **VISUAL CAMERA**

KT-256F

Thermal imager

Features

- Measuring range: -20°C...550°C (-4°F... 1022°F).
- Quick start.
- Fast temperature measurement.
- Automatic signalling of exceeded alarm threshold.
- Autofocus.
- Saving IR images to SD card.
- Built-in Li-Ion battery with 16-hour working time.
- Interfaces: USB type C, SD slot.
- Can be set up on a tripod.



2.4" display
Clear temperature reading



Autofocus trigger
Sharp image with a single press



Trigger
Temperature measurement with a single press

Large buttons
Conveniently located for flawless control

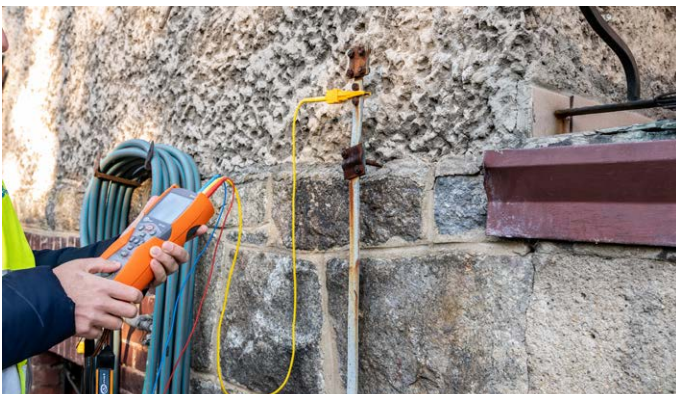
Technical data

Safety and work conditions

	MPI-507	KT-256F
Measuring category according to EN 61010	IV 300 V, III 600 V	-
Ingress protection	IP67	IP54
Dimensions	220 x 102 x 61 mm	194 x 62 x 76 mm
Weight	ca. 0.8 kg	ca. 0,4 kg

Memory and communication

Memory of measurement results	990 cells, 10 000 records	32 GB
Data transmission	Bluetooth	USB



Standard accessories



MPI-507 meter
WMGBMPI507



**Thermal imager
KT-256F**
WMGBKT256F



**WS-03 adapter
with START button
(UNI-Schuko plug)**
WAADAWS03



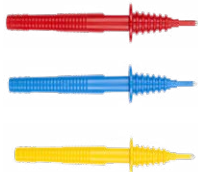
**Test lead 1.2 m
(banana plugs)
red / blue / yellow**
WAPRZ1X2REBB
WAPRZ1X2BUBB
WAPRZ1X2YEBB



**Test lead 30 m,
red (banana plugs,
on H-frame reel)**
WAPRZ030REBBN



**Test lead 15 m,
blue (banana plugs,
on H-frame reel)**
WAPRZ015BUBBN



**Pin probe 1 kV
(banana socket)
red / blue / yellow**
WASONREOGB1
WASONBUOGB1
WASONYEOGB1



**Crocodile clip
1 kV 20 A red**
WAKRORE20K02



**Crocodile clip
1 kV 20 A yellow**
WAKROYE20K02



**2 x earth con-
tact test probe
(rod), 25 cm**
WASONG25



Z-20 USB charger
WAZASZ20



**4x AA 1.5 V
alkaline battery**



M1 hanging straps
WAPOZSZE4



**M1 hanging
hook straps**
WAPOZUCH1



Wristband
WAPOZPAS1



**L-11 hard carry-
ing case**
WAWALL11



16 GB microSD card
WAPOZMSD16



Type C USB cable
WAPRZUSBC



**Factory calibration
certificate MPI-507**



**Declaration of verifi-
cation KT-256F**